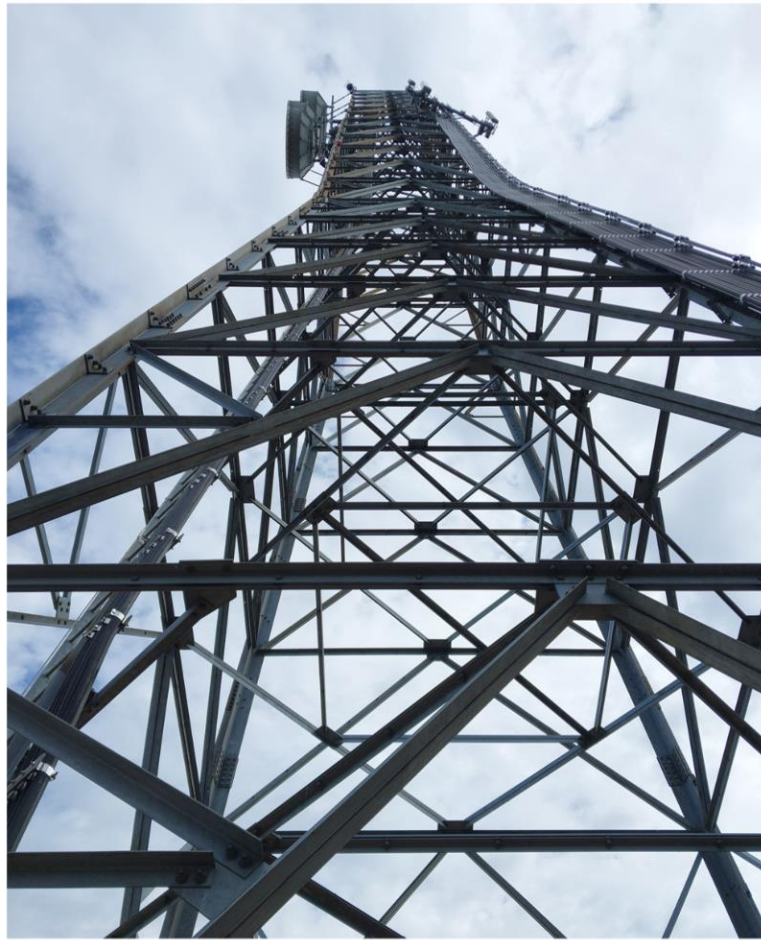




BirminghamMesh.org

WHAT'S OUR DEAL



9/24/2024

# ENABLE SECURE, SELF-SUPPORTED, EMERGENCY COMMUNICATION

- Build a self-supported mesh communications network independent from the internet and telephone networks
- Build a community of people interested in improving emergency communications
- Focus the community to expand its capabilities
- Communicate and learn
- Make more friends
- Continue



# BUILD A SELF-SUPPORTING MESH COMMUNICATIONS NETWORK INDEPENDENT FROM THE INTERNET AND TELEPHONE NETWORKS

- Deploy Meshtastic nodes in optimal locations
  - Build “Sponsored Nodes” and donate them to:
    - Amateur Radio clubs
    - Tower Managers
    - Building Managers





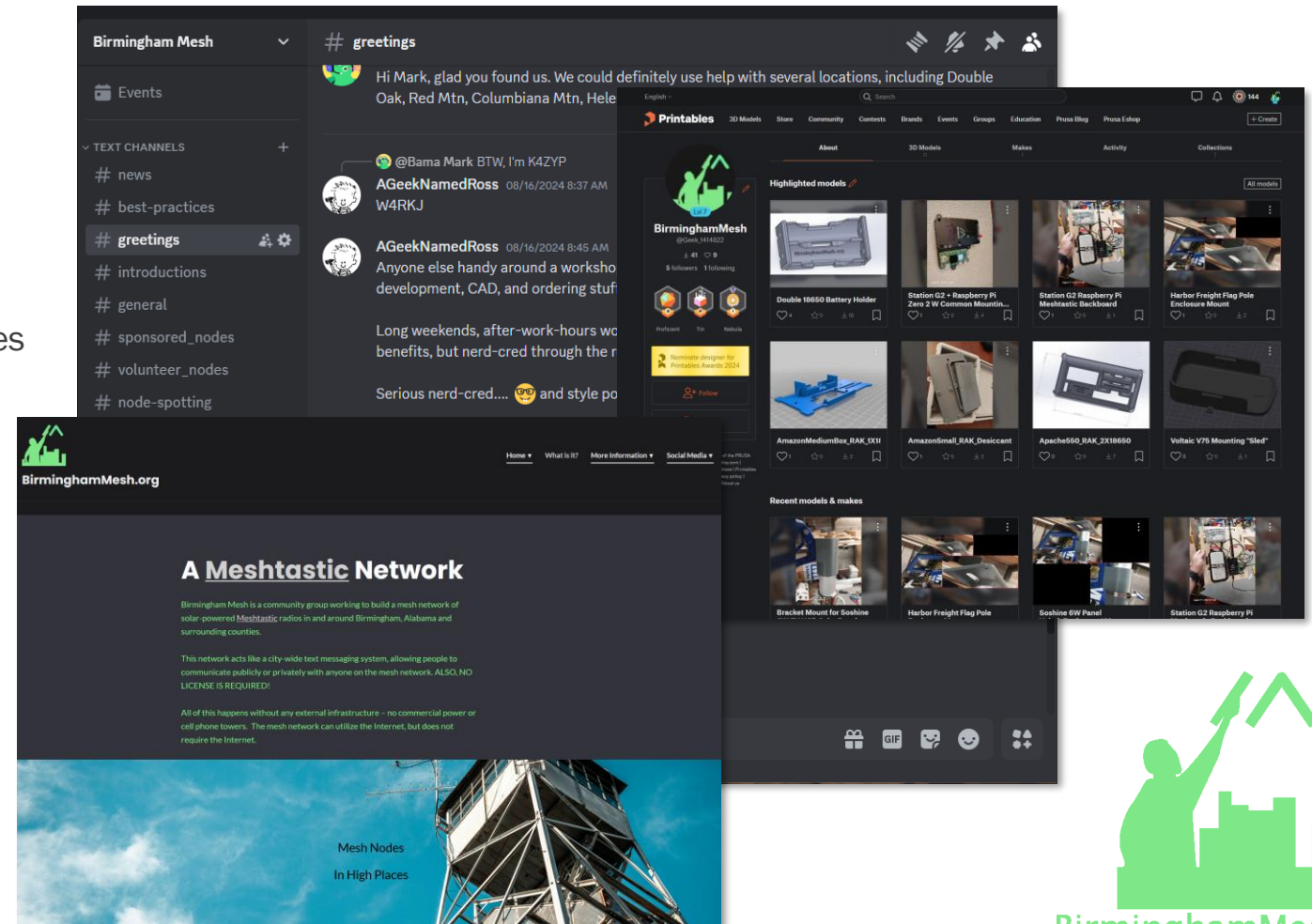
# BUILD A SELF-SUPPORTING MESH COMMUNICATIONS NETWORK INDEPENDENT FROM THE INTERNET AND TELEPHONE NETWORKS

- Deploy Meshtastic nodes in pretty darn good locations
  - Coordinate with the community to deploy volunteer nodes
  - Build, test and document hardware-recipes for various use-cases
  - Coordinate best-practices with community to:
    - Grow and optimize network



# BUILD A SELF-SUPPORTING MESH COMMUNICATIONS NETWORK INDEPENDENT FROM THE INTERNET AND TELEPHONE NETWORKS

- Share what we learn
  - Gather knowledge to feed back into best practices
  - Share data, compare notes
  - Experiment and learn
- Website, Discord, Printables.com, YouTube



---

# **BUILD A SELF-SUPPORTING MESH COMMUNICATIONS NETWORK INDEPENDENT FROM THE INTERNET AND TELEPHONE NETWORKS**

- Look for other ways that support our goals
  - Amateur Radio
  - AREDN
  - Others???
- Connect with more cities
  - Compare notes
- Work with Meshtastic project
  - Document bugs
  - Develop practical feature requests



# STATE OF THE MESH

- The Map
  - I know... it's coming, but it's tricky
- Big Nodes – Station G1 with 30W solar
  - South West Jefferson County 60' up a tower
  - Bald Rock Mountain in St Clair County
  - Shelby County near Columbiana
  - More (that I've forgotten)
- Small Sponsored Nodes – RAK with 6W solar
  - South Shades Crest between 150 and Hwy 52
  - More (that I didn't have time to add)

